

# Giovanetti tessuti



LEATHER  
P1  
COL.1013

LEATHER  
P1  
COL.1014

## LEATHER P1

## CAT. P1

Pelle di bovino europeo, concia al cromo, spessore mm 0.9-1,1;  
fatica a flessione >50.000 cicli, sfregamenti a secco >1.000 cicli,  
European bovine leather, chrome tanning, thickness mm. 0.9-1,2;  
cracking fatigue >50.000 cycles, dry friction >1.000 cycles



1001

1002

1003

1004

1005

1006

1007

1008

1009

1010

1011

1012

1013

1014

1015

1016

1017

1018

1019

1020

# Giovanetti top leather collection mb



Col. 202





**PELLE PISTA COL. 1016 CAT. MB**  
Pelli bovine da Nuova Zelanda - Europa - USA  
Effetto PULL-UP  
Spessore mm 0,9 ca., Flessometro >=20.000 Cicli  
Bovine Leather from New Zealand - Europe - USA  
PULL-UP effect  
Thickness mm 0,9 - Flexing endurance >=20.000 Cycles



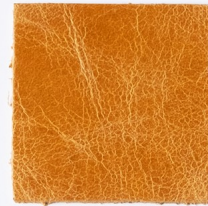
1001



1002



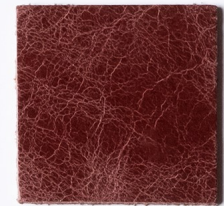
1003



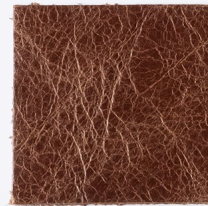
1004



1005



1006



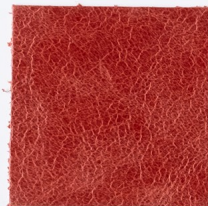
1007



1008



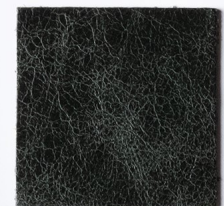
1009



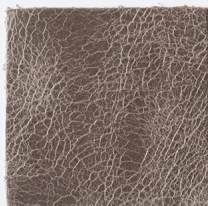
1010



1011



1012



1013




1014



1015

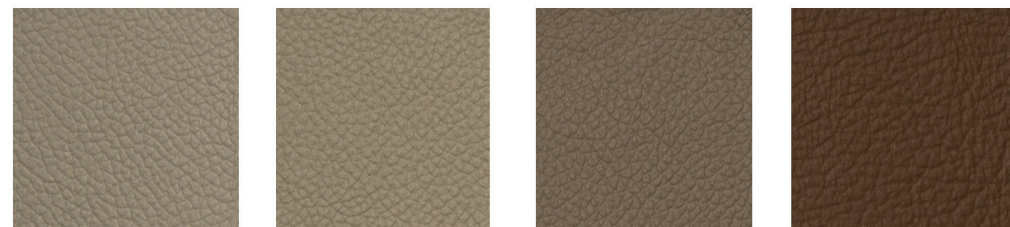
# Giovanetti Renna CAT. P1



Parametro <i>Test</i>	Metodo di prova <i>Test Method</i>
Solidità del colore allo strofinio a secco. <i>Dry rubbing fastness</i>	UNI EN ISO 11640
Solidità del colore allo strofinio a umido. <i>Wet rubbing fastness</i>	UNI EN ISO 11640
Solidità del colore allo strofinio con sudore alcalino. <i>Alkaline perspiration rubbing fastness</i>	UNI EN ISO 11640
Resistenza alla luce, lampada a d arco di Xeno. <i>Light fastness to artificial Xenon light</i>	UNI EN ISO 105 B02
Adesione della rifinitura <i>Adhesion of finish</i>	UNI EN ISO 11644
Resistenza alla flessione <i>Flexing endurance</i>	UNI EN ISO 5402
Determinazione del pH <i>Determination of pH</i>	UNI EN ISO 4050
Indice di differenza (solo per pH <4) <i>Difference figure (only for pH &lt;4)</i>	UNI EN ISO 4050
Resistenza allo strappo Pantalone <i>Tear strenght-Single edge tear</i>	UNI EN ISO 3377-1
Reazione al fuoco <i>Burning behaviour</i>	BS 5852 Part 1+2



1 2 4 6



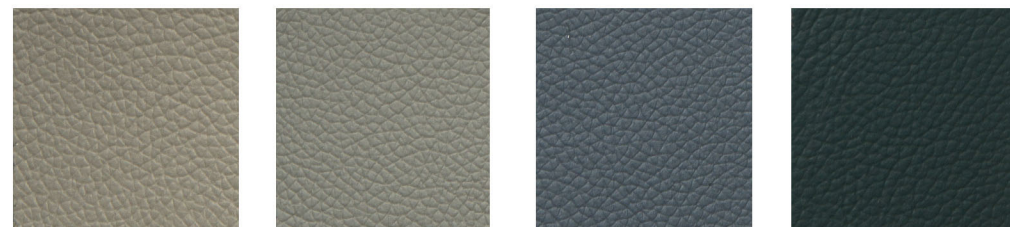
7 8 9 10



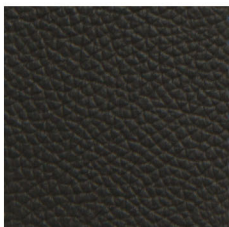
103 109 120 121



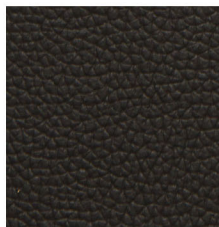
122 123 124 125



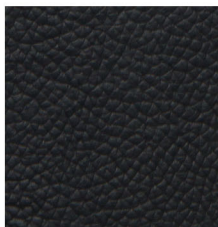
126 127 130 460



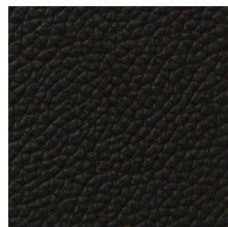
606



620



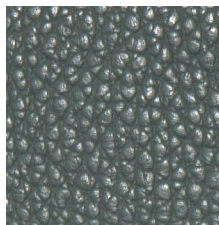
730



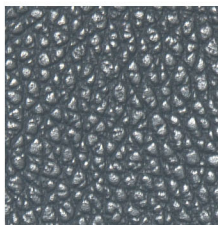
742



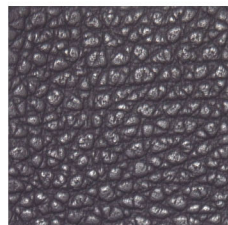
957



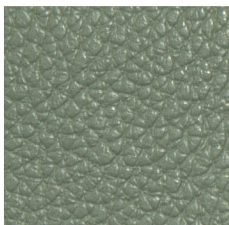
40



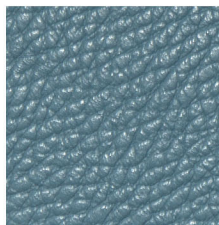
41



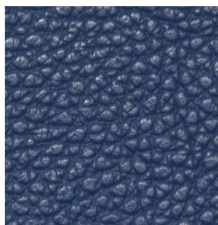
58



63



71



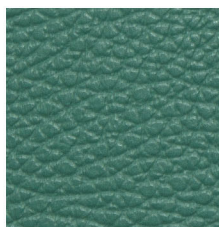
78



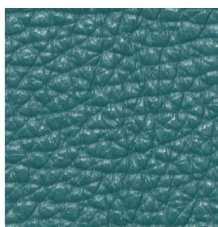
82



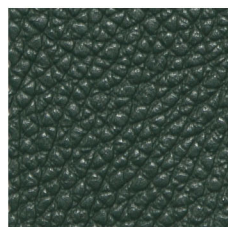
83



84



85



86



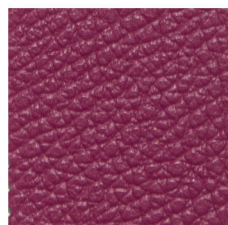
87



88



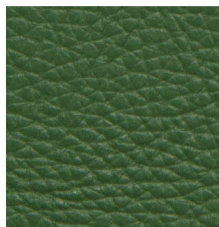
89



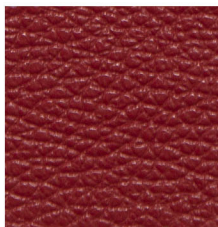
90



91



621



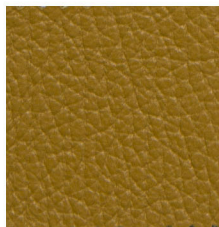
47



D 29



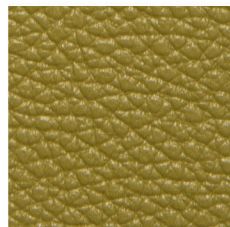
D 84



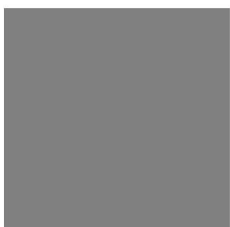
D 36



D 04



D 89





**LEATHER NABUK COL.262**

Italian bovine leather, chrome tanning,  
penetrating dyeing, finishing Nabuk,  
thickness mm 1,1-1,3; dry friction  $\geq 10$   
cycles; wet friction  $\geq 10$  cycles



Col. 253



Col. 238



Col. 232



Col. 203



Col. 276



Col. 245



Col. 250



Col. 258



Col. 214



Col. 261



Col. 262



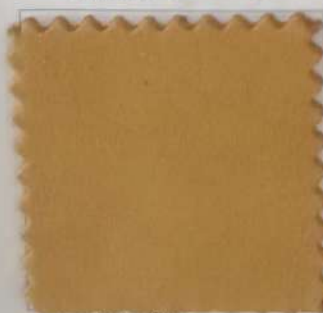
Col. 210



Col. 211



Col. 209



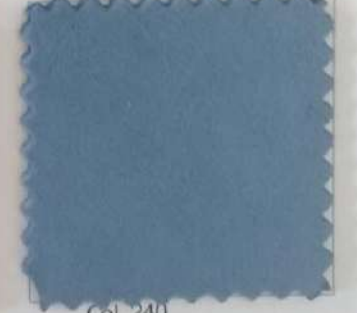
Col. 208



Col. 212



Col. 215



Col. 240